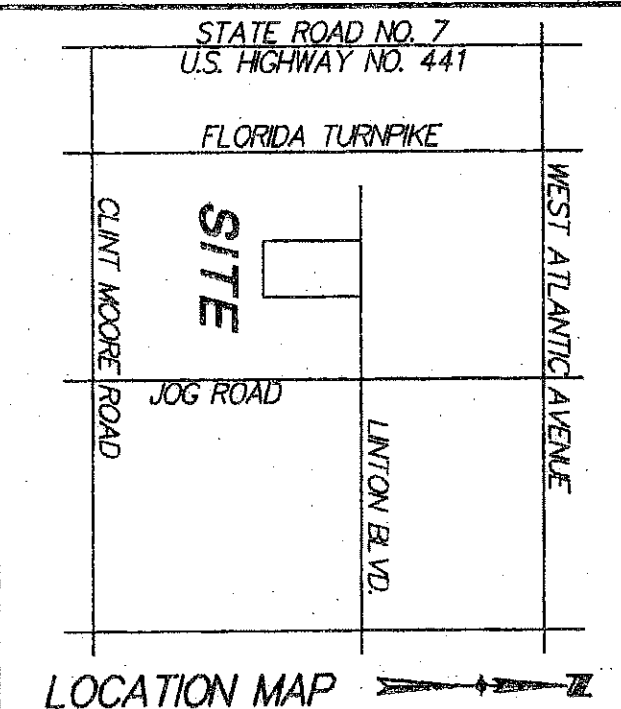


132

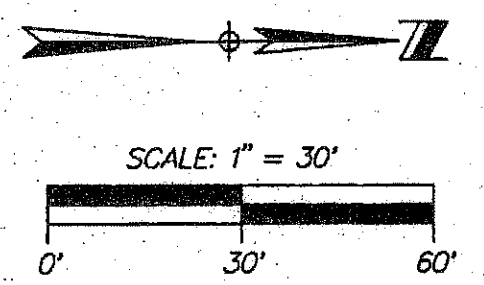
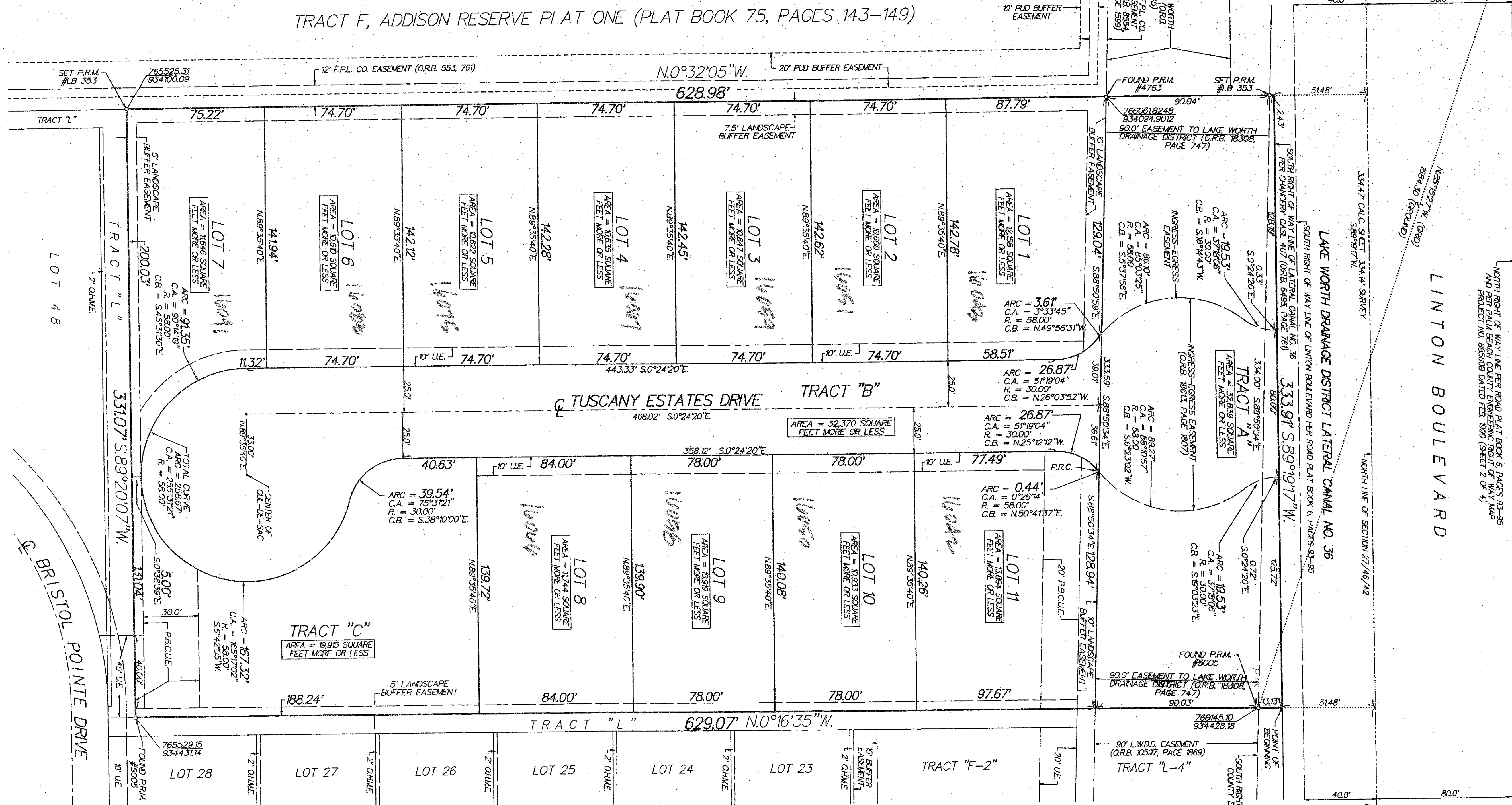
MIZNER GRANDE ESTATES

BEING A PORTION OF THE NORTHWEST QUARTER (N.W.1/4)
OF SECTION 27, TOWNSHIP 46 SOUTH, RANGE 42 EAST,
PALM BEACH COUNTY, FLORIDA

SHEET 3 OF 3
SEPTEMBER 2004



TRACT F, ADDISON RESERVE PLAT ONE (PLAT BOOK 75, PAGES 143-149)



- LEGEND:
- P.R.M. = PERMANENT REFERENCE MONUMENT (4"x4" CONCRETE MONUMENT WITH BRASS CAP)
 - L.A.E. = LIMITED ACCESS EASEMENT
 - U.E. = UTILITY EASEMENT
 - L.B.E. = LANDSCAPE BUFFER EASEMENT
 - L.M.E. = LAKE MAINTENANCE EASEMENT
 - O.R.B. = OFFICIAL RECORD BOOK
 - L.W.D.D. = LAKE WORTH DRAINAGE DISTRICT
 - R. = RADIUS
 - C.A. = CENTRAL ANGLE
 - C.B. = CHORD BEARING
 - O.H.M.E. = OVERHANG MAINTENANCE EASEMENT
 - P.B.C.U.E. = PALM BEACH COUNTY UTILITY EASEMENT

BRISTOL POINTE (PLAT BOOK 85, PAGES 187-190)

TABULAR DATA: (AS PER DRC APPROVED SITE PLAN DATED 7/14/04)

PETITION NO.	2004-004
PROJECT NO.	0912-000
NAME OF DEVELOPMENT	60 SINGLE HOMES MIZNER GRANDE ESTATES
PROPOSED USE	SINGLE FAMILY
FUTURE LAND USE DESIGNATION	LR-3
TIER	URBAN/SUBURAN
ZONING DISTRICT	RT
SECTION, TOWNSHIP, RANGE	27/46/42
PROPERTY CONTROL NO.	00-42-46-27-00-000-3130
TOTAL GROSS ACREAGE	4.8 ACRES

REVISIONS
 DATE
 BY
 REASON
 09/13/04
 MIZNER GRANDE ESTATES
 PLANNING
 09/13/04
 MIZNER GRANDE ESTATES
 PLANNING
 09/13/04
 MIZNER GRANDE ESTATES
 PLANNING

NORTH RIGHT OF WAY LINE PER ROAD PLAT BOOK 6, PAGES 93-96
 AND PER PALM BEACH COUNTY ENGINEERING RIGHT OF WAY MAP
 PROJECT NO. 885608 DATED FEB. 1990 (SHEET 2 OF 4)

FOUND PALM BEACH COUNTY
 MONUMENT "D" (G.M.D.)
 2818.91' (ROUND) N89°24'04"E (G.M.D.)

NORTH 1/4 CORNER
 SECTION 27/46/42
 (FOUND NAIL & DISK
 NUMBER UNREADABLE)
 POINT OF COMMENCEMENT